



Volkswagen Kamper



The 6-seater car about town that converts to a 4-berth camper. Die 6-sitplek-stadswa wat omskep in 'n 4-bank-kamper
www.vwT25camper.info - a useful website for owners and enthusiasts of VW T25 / T3 / Vanagon Campervans



The new VW Kamper

Designed to fulfil two equally important functions: that of a roomy six seater estate car during the week, and, by means of the innovative high-rise roof, to convert to a fully equipped, self-contained home for weekends and holidays. Developed in co-operation with CI Industries, the Kamper is constructed to Volkswagen's exacting safety and engineering standards. To give you the kind of Volkswagen reliability, economy and efficiency you've come to expect.

The first VW conversion with a high-rise roof

This versatile roof provides a remarkable 2,28 m of headroom over the complete standing area. It was designed for maximum safety and elevates hydraulically by means of gas-filled struts. It is double skinned and completely insulated for winter warmth and coolness during summer. Additional ventilation is possible through the wind-up rooflight with built-in flyscreen. For sport or gamewatching, the side panels may be folded away without affecting the roof's stability.

How six can travel and four can sleep in comfort The VW Kamper will carry up to six people (five forward facing seats plus driver) and sleeps four adults in two upholstered double beds. The rear bench seat by day converts to a 185 x 122 cm double bed at night, and two more people sleep in the 183 x 122 cm double bed in the

Conversion to a dinette is simple

The multi-purpose passenger seat swivels into

position and a side-facing seat completes the arrangements for six people at mealtimes.

Cooking and cleaning facilities

The fitted cabinet comes complete with melamine crockery for six. The standard features include a gas/12 volt refrigerator, cooker unit with grill, 55 litre water tank and stainless steel sink. All surfaces wipe clean and are heat and scratch resistant.

On space and storage

Features include:

- cabin roof rack (above the driving compartment)
- food and utensil locker behind the driver's seat
- storage under the side seat for gas bottles. (Optional Portapotty fits the same space.)
- drawers and cupboards for all equipment

The tailgate area includes hanging space for clothes, space for shoes, drawers for linen and a place for the foldaway table which also acts as a luggage shelf.

Fittings and finish

The Kamper body sides are insulated and the floor area including the cab is carpeted. The furniture is finished in Japanese teak. The seats are covered with ribbed cloth, and curtain and material design is by Daniel Whitehead.

OPTIONAL: Attractive free standing side tent specially developed for the VW Kamper. Portapotty chemical toilet.



- A The cabin by night.
- B The driving compartment.
- C The Kamper's kitchen.
- D The cosy upper double bed. (183 x 122 cm)
- E Tailgate view.
- F Looking back from the driver's seat.
- G The dinette. Table can be taken outdoors.

- A Die kajuit snags.
- B Die bestuurkajuit.
- C Die Kamperkombuis.
- D Die snoeigse boonste dubbelbed. (183 x 122 cm)
- E Sigberaamkampervans
- F 'n Terugblik van die bestuursetplek.
- G Die eetverrek. Tafel kan buite gebruik word.

Die nuwe VW Kamper

Ontwerp om twee ee belangrike funksies te vervul: dié van 'n ruim sessieplek stasiewa gedurende die week. En met 'n vindingryke hoëligdak, word dit 'n ten volle toegeruste, selfstandige tuiste vir naweke en vakansies. In samewerking met CI Industries ontwikkel, word die Kamper volgens Volkswagen se streng standaarde van veiligheid en ingenieurswese vervaardig. Om jou die soort Volkswagen-betroubaarheid, ekonomie en doeltreffendheid te verseker wat jy geleer het om van VW te verwag.

Die eerste VW-aanpassing met 'n hoëligdak
Hierdie veelsydige dak voorsien 'n merkwaardige 2,28 m kopruimte oor die hele staangebied. Dis ontwerp vir maksimum veiligheid en lig hidroulies deur middel van gasge vulde stutte. Die dubbelwand is volkome geïsoleer vir winterwarme asook koel te gedurende die somer. Bykomende ventilasie is moontlik met die oopbare daklig toegerus met 'n ingeboude vliegskerm. Vir buitemuurse sport of om diere te bespied, vou die sypaneel weg sonder om die stabiliteit van die dak te benadeel.

Hoe ses kan reis en vier met gemak kan slaap.

Die VW Kamper laat tot ses mense sit (vyf sitplekke wat vorentoe wys plus die bestuurder) en gee slaapplek aan vier volwassenes in twee gestoffeerde dubbelbeddens. Die agterste rusbank omskep snags in 'n 185 x 122 cm dubbelbed, terwyl nog twee mense in die 183 x 122 cm dubbelbed in die kamperdak kan slaap.

Omskepping in 'n eetvertrek is eenvoudig

Die meerdoelige passasiersplek swaai in posisie en 'n sitplek wat na die sykant toe wys, voltooi die uitleg vir ses mense met maaltye.

Kook- en skoonmaakgeriewe

Die ingeboude kabinet kom volledig met melamine eetgerei vir ses. Standaardkenmerke, sluit 'n gas/12 volt-koelkas in, 'n stoofeenheid met 'n rooster, 'n 55-liter-watertenk en 'n opwasbak van vlekrye staal.

Alle oppervlakte vee skoon en is hitte en skraapbestand.

Omtrent ruimte en berging

Glanspunte sluit in:

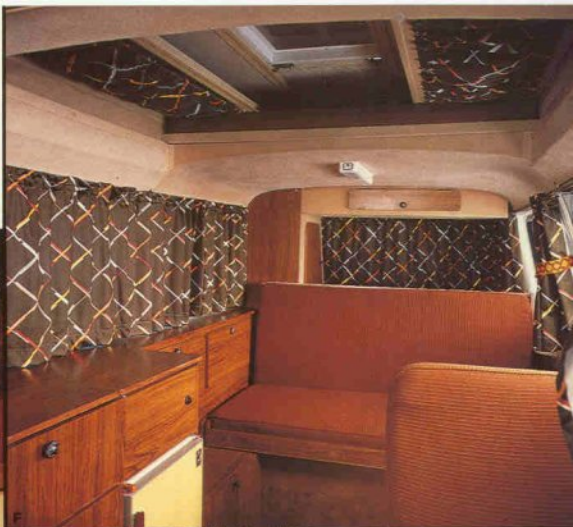
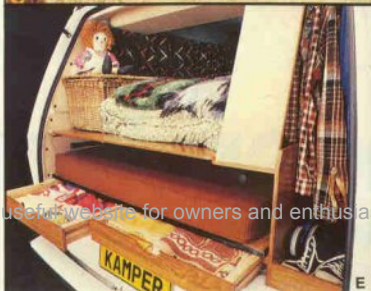
- kajuitdakrak (bokant die bestuurkajuit)
- sluitkas vir voedsel en eetgerei agter bestuursplek
- pakplek onder kantsplek vir gasbottels. (Die opsionele Portapottie pas op dieselfde plek.)
- laaie en kaste vir alle toerusting

Die agterdeurruimte behandel die sluitplek vir vir skoene, laaie vir linne en 'n plek vir die wegvoutafel wat ook as 'n bagasieraak dien.

Bybehore en afwerking

Die Kamper se bakkante is geïsoleer en die vloer, insluitende die kajuit, is met tapyt uitgelê. Die meubels is in Japannese kaaft afgewerk. Die sitplekke is met geribde materiaal bedek. Die gordynontwerp en materiaal is deur Daniel Whitehead.

OPSIONEEL: Aantreklike, vrystaande kanttent spesiaal ontwikkel vir die VW Kamper. Portapottie chemiese toilet.



Specifications

Engine: Water cooled, 4 cylinder, horizontally opposed, rear mounted, 1,9ℓ petrol engine.

Capacity	1913 cm ³
Bore	94 mm
Stroke	69 mm
Compression Ratio	8,6:1
Output (kW DIN)	57 at 4600 r/min
Torque (N.m)	141 at 2600 r/min

Dimensions

Overall Length (mm)	4600
Overall Height (roof down) (mm)	2255
Overall Width (mm)	1845
Tank Capacity (ℓ)	85
Turning Circle (m)	10,5

Electrical System

Voltage (V)	12
Battery (Ah)	45
Starter (kW)	0,8
Alternator with Voltage Regulator (W)	540

Bed Sizes

Main Double Bed	1855 mm x 1220 mm
Upper Double Bed	1830 mm x 1220 mm



Suspension

Rear: Independent suspension with diagonal trailing links, mini block coil springs and telescopic shock absorbers.

Front: Independent suspension with double wishbones in coil springs and telescopic shock absorbers.

Brakes

Hydraulic dual circuit system, discs at front, self-adjusting drums with retardation-sensitive pressure regulator at rear. Brake servo. Handbrake effective on rear wheels.

Wheels

Perforated steel disc wheels.
Rim size 5.5J x 14
Tyres:
185 SR14 reinforced radials

Transmission

Single plate dry clutch, synchronised four speed gearbox and differential in one housing. Rear wheel drive.

Watertank

55ℓ

Spesifikasies

Enjin: Waterverkoel, 4-silinder, horisontale uitlig, agtergemonteerde, 1,9ℓ petrolenjin.

Kapasiteit	1913 cm ³
Boor	94 mm
Slag	69 mm
Drukverhouding	8,6:1
Lewering (kW DIN)	57 teen 4600 r/min
Wringkrag (N.m)	141 teen 2600 r/min

Afmetings

Algehele Lengte (mm)	4600
Algehele Hoogte (dak plat) (mm)	2255
Algehele Wydte (mm)	1845
Terkkapasiteit (ℓ)	85
Draaisirkel (m)	10,5

Elektriese Stelsel

Spanning (V)	12
Battery (Ah)	45
Aansitter (kW)	0,8
Alternator met spanningsreëlraar (W)	540

Bedgroottes

Hoof Dubbelbed	1855 mm x 1220 mm
Boonste Dubbelbed	1830 mm x 1220 mm

Vering

Agter: Onafhanklike vering met oorkruissleeparms, mini blokspiraalvere en teleskopiese skokbrekers.

Voorant: Onafhanklike vering met dubbelwensbene in spiraalvere en teleskopiese skokbrekers.

Remme

Hidrouliese dubbelbaansteisel, skywe voor, selfstellende trommels met afwyking-sensitiewe reëlraar agter. Remservo. Handrem doeltreffend op agterwiele.

Wiele

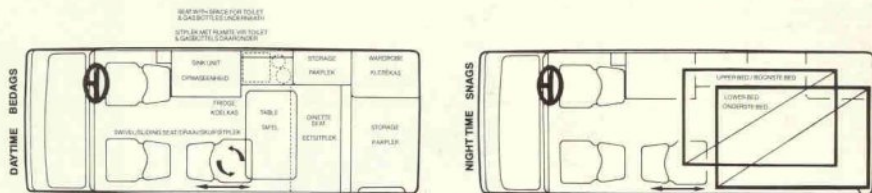
Gepereforeerde staalskywiele
Vellinggrootte 5.5J x 14
Bande:
185 SR14 versterkte straallaagbande

Transmissie

Enkeldroëplaatkoppelaar, sinchroonskakelende 4-spoed-ratkas en ewenaar in een hulsul. Agterwiel aandrywing.

Watertank

55 ℓ



Volkswagen Kamper



www.vwT25camper.info - a useful website for owners and enthusiasts of VW T25 / T3 / Vanagon Campervans

KAMPER CONVERSION BY  INDUSTRIES KAMPERAANPASSING