

THE NEW KOMET



A genuine 4 berth high top from



utohomes

www.vwT25camper.info - a useful site for owners and enthusiasts of Volkswagen T25 camper vans.

A genuine 4 berth high top!

The new 4 berth VW Komet is probably the most stylish VW conversion ever produced in Britain. Unlike some competitive conversions it combines beauty with excellent aerodynamics and great practicality as there is a full sized 6' 0" x 4' 1 1/2" high level double bed with more than adequate headroom, plus ventilation to match with a multi directional opening roof light with flyscreen and two opening high level windows. Not only does the Komet sleep four adults in two full sized double beds in comfort and privacy, it also features two dinettes, has swivels on both the driver and passenger cab seats, and has a stainless steel roof rack and ladder - all as standard equipment.

Like other VW models by Autohomes the Komet has a fully insulated caravan body, a completely safe mains electric hook-up with earth leakage and overload circuit breakers, enamelled sink and cooker/grill with toughened glass lid, and a 2 cubic ft refrigerator (gas/12v/mains) with freezer compartment and electronic ignition.

Other features include storage for a portable flush toilet, built-in 12 gallon fresh water tank fitted above floor (to help avoid freezing in winter) with water gauge and lockable exterior water filler, 12 volt socket, vanity unit, cocktail cabinet, crockery and cutlery storage.

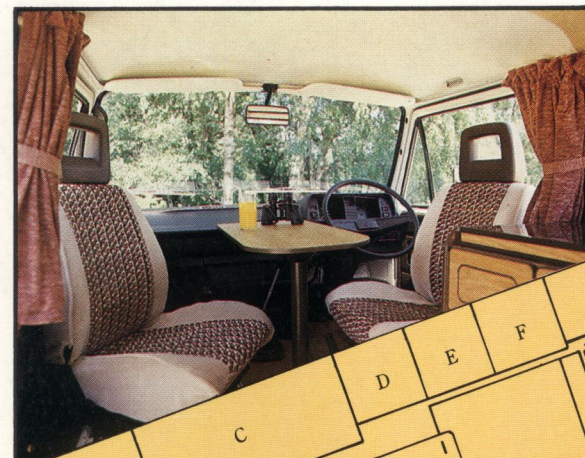
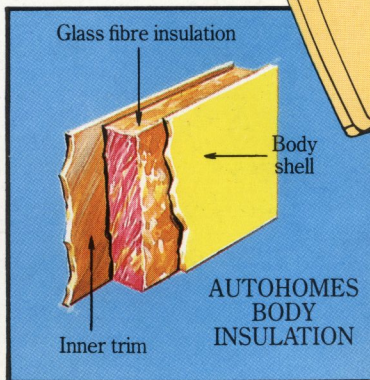
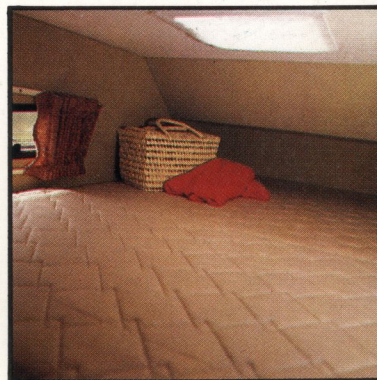
More than adequate general storage facilities include wardrobe, cupboards, lockers, and drawers. The two large drawers over the engine simply lift out for easy servicing.

Both the roof ribs, as recommended by Volkswagen, are left intact, thus guaranteeing the structural integrity of the vehicle.

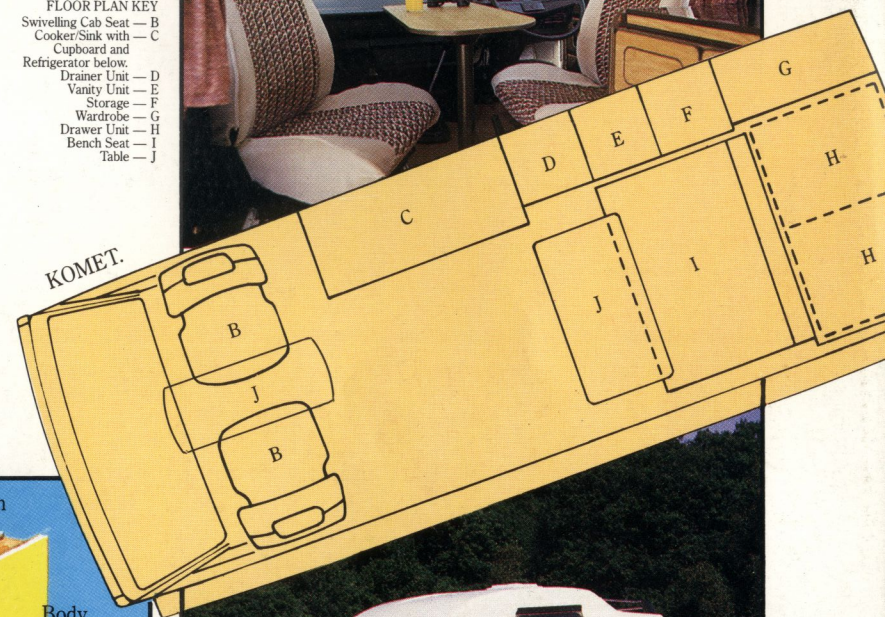
The Komet is available with a full range of optional extras from 112 bhp petrol engine to turbo diesel to four wheel drive, or a blown air heating system to a water heater to built-in TV! You name your specification and we'll build it!

OPTIONAL EXTRAS

78 and 112 bhp petrol engines, diesel and turbo diesel engines, 5 speed gearbox, automatic transmission, four wheel drive, built-in but removable TV, fitted crockery, second battery and electrical control panel (with fuses and battery condition indicator), blown air heating system, water heater, waste water tank, flush toilet, child's cab bunk, flyscreen for sliding window, rear seat restraint straps, rack systems including bicycle and sailboard racks. For further details please see separate price list or consult your dealer.



- FLOOR PLAN KEY
- Swivelling Cab Seat — B
 - Cooker/Sink with Cupboard and Refrigerator below — C
 - Drainer Unit — D
 - Vanity Unit — E
 - Storage — F
 - Wardrobe — G
 - Drawer Unit — H
 - Bench Seat — I
 - Table — J



KOMET DIMENSIONS

Overall Length	15' 0"	4570mm
Overall Height	8' 6"	2591mm
Overall Width	6' 0 3/4"	1850mm
Lower double bed	6' 1" x 4' 0"	1854mm x 1219mm
Upper double bed	6' 0" x 4' 1 1/2"	1829mm x 1257mm
Fresh water tank capacity	12 gallons	54.5 litres

AUTOHOMES (UK) LIMITED reserve the right to change prices, specifications or equipment at any time without notice. All weights and measurements quoted are approximate and not intended for legal purposes. They have been checked in good faith, but accuracy cannot be guaranteed.



Autohomes (UK) Limited,
59 Old Wareham Road, Poole, Dorset
Telephone: Parkstone 01202 731711 Telex: 41342

www.vwT25camper.info - a useful site for owners and enthusiasts of Volkswagen T25 camper vans.